

### Features

- AAMA Rated (R20 Up to C40)
- Tilt-in Sash for Ease of Cleaning
- 3/4" Dual Glazing
- 2 5/8" Frame Depth
- Marine Glazed
- Clean and Even Sight Lines
- Sloped Sill w/ Weep holes
- Block & Tackle Balance System
- Built-in Stop for Ventilation
- Designer Series Lock

#### Options:

- Sculptured Grids
- Flat Grids
- Leaded Glass
- V-Groove Glass

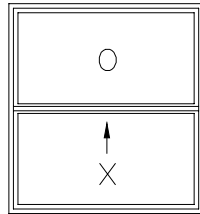


## Single Hung Window

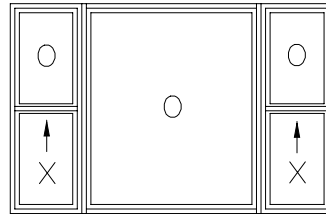
The Single Hung Window is the premier product in the Imperial Series. This window features a lower sash panel that gently glides to a ventilating position. The sash panel tilts inward, making exterior glass cleaning a breeze. For your convenience, the design incorporates a simple-to-use latch and lock mechanism.

*Ask your Architectural Representative for more information.*

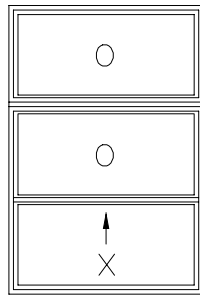




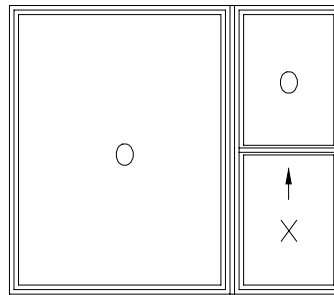
1/1 Single Hung



1/1 by PW by 1/1

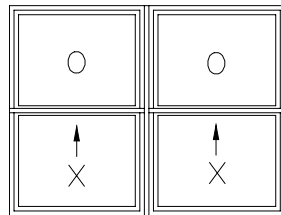


PW over SH

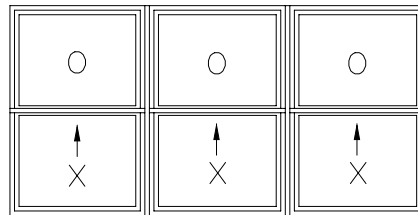


PW by SH

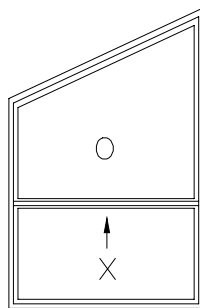
Configuration



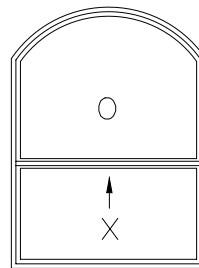
Twin 1/1 by 1/1



Triple 1/1 by 1/1 by 1/1



Rake Top SH



Arch Top SH

Egress Formula: 1/1 Opening Width =  $NFW - 2 \frac{11}{16}''$  Must be greater than 20"  
 Opening Height =  $NFH / 2 - 4 \frac{9}{16}''$  Must be greater than 24"  
 Square Footage =  $OW * OH / 144$  Must be greater than 5.7 Sq. Ft.

## Glazing Materials

Our insulating glass units are manufactured using PPG's patented INTERCEPT® warm edge technology. This process incorporates a thin metallic spacer between the glass panes that results in a higher energy performance, especially around the perimeter of the glass, giving it a "warmer edge." We also utilize HB Fuller's Thermo Seal® hot melt butyl, which has a very low MVTR and has been tested to exceed the performance requirements for CBA level under ASTM E773/E774.

## Nail-on Fin

IWC uses a 1" nail-on fin that is pre-punched for easy installation. Fin set backs are available in 1<sup>3/8</sup>" for use with power wall stucco systems and 1" for conventional three coat systems.

## Weeping

IWC utilizes a weep door that allows moisture to escape and helps to prevent dust from being blown back into the window.

## Vent Panels

Our vent panels have self tightening interlocks that lock with the fixed panel to create a tight seal against air and water.

## Block & Tackle Balance System

IWC utilizes a block and tackle balance system for all Single Hung windows. This type of system is the most dependable system on the market and insures that your windows will be easy opening and smooth operating for years to come. These carefree balancers need no adjustment or winding and allow the greatest egress available in the industry.

## Locking Mechanism

The 6200 Series features a designer style latch with an improved detent in both the locking and unlocking motion of the handle that assures the homeowner that the cam has completed its travel. The latch is zinc die-cast with a beautiful powder-coat finish.

## Weatherstripping

IWC uses finseal woolpile weatherstrip around the full perimeter of the panels to ensure an unbroken seal against the weather.

## Screens

Screens are made of rigid aluminum and solid plastic corner pieces. All screen frames match the color of the window frame. Plastic pulls are located on the inside of the screen for screen removal. The screen material is a strong fiberglass mesh that is durable and easy to replace.

## Tilt Sash

The 6200 Series features a tilt-out sash for easy cleaning. The tilt latch mechanism is spring loaded for convenience and offers a patented actuator locking mechanism to assure the safety from accidental release of the sash tilting system.

## Options

Glass- Let your imagination be your guide with our multitude of glass possibilities. If you have a question, feel free to contact your architectural representative anytime. We're here to help! Grids are available in flat and sculptured and may be used in a variety of designs.